

Remote Access

If you want to just check your email we would recommend you use the email only option for webmail access.


If you need to access your documents or any SDJA applications you will need to install the Citrix Receiver to connect to the remote server.

1. Click on the link below and it will take you to the website where you can download the Citrix client.
2. Citrix Client Web Plug in
<http://www.citrix.com/products/receiver/overview.html>

If the link above does not work copy and paste it into a browser address bar.

3. Click on the download button.

any device, including smartphones, tablets, iOS and Macs. Working with Citrix-enabled IT infrastructure, Receiver gives you the mobility, control and freedom you need to get your work done.

 Feature matrix: find out what's included with Citrix Receiver

[Download Citrix Receiver](#)

The next window click on download Receiver for your system whether it's a Windows or a Mac



Citrix Receiver

Access your apps, data and desktops from any de

[Download Receiver for Windows](#)

[Find Citrix Receiver for other platforms](#)

[Download previous versions of Receiver](#)

4. Once the Citrix Receiver is downloaded, install on it on your system
5. Then go to www.sdja.com and to “**Staff Only**” and click on the Remote access icon

Remote Access

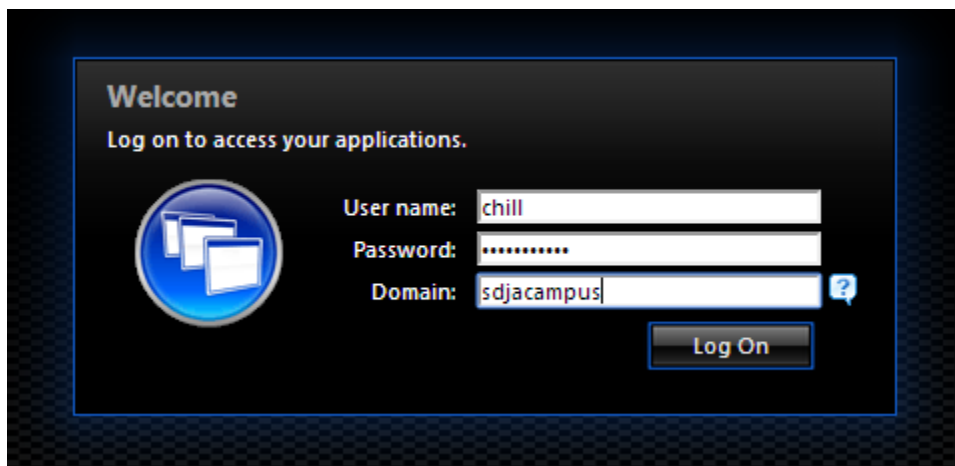


[Click here for Citrix connection instructions](#)
[Download Remote Desktop Client](#)


[n](#)

[Staff Only](#)

6. At the next Screen you will enter the following
Enter your school “**Username**”: “**Password**” and “**Domain**” which is “**SDJACAMPUS**”




Welcome
Log on to access your applications.

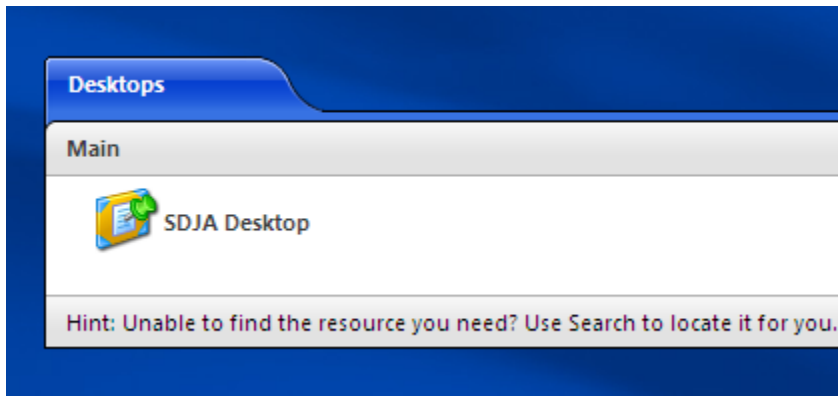


User name:

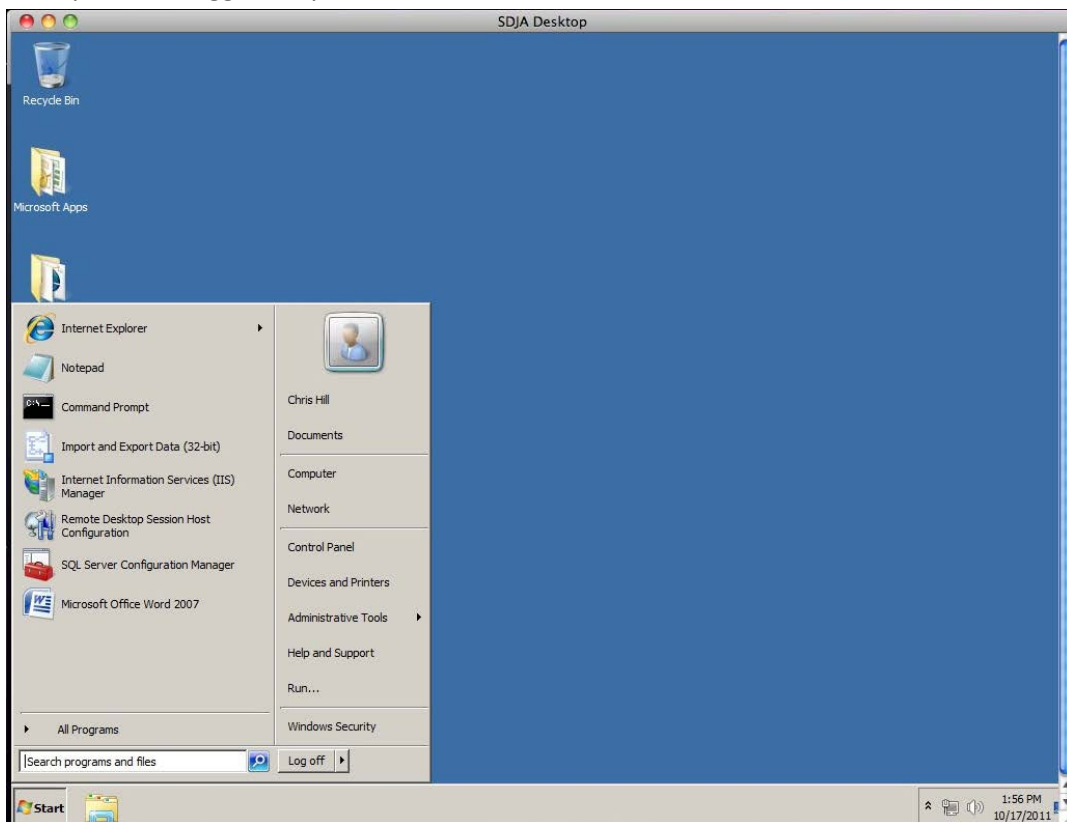
Password:

Domain: 

7. Click on the “SDJA Desktop” Icon



8. Once you have logged on you should see a screen like the one below.



9. Once you are ready to log off, click “Start” and click on “Log Off”